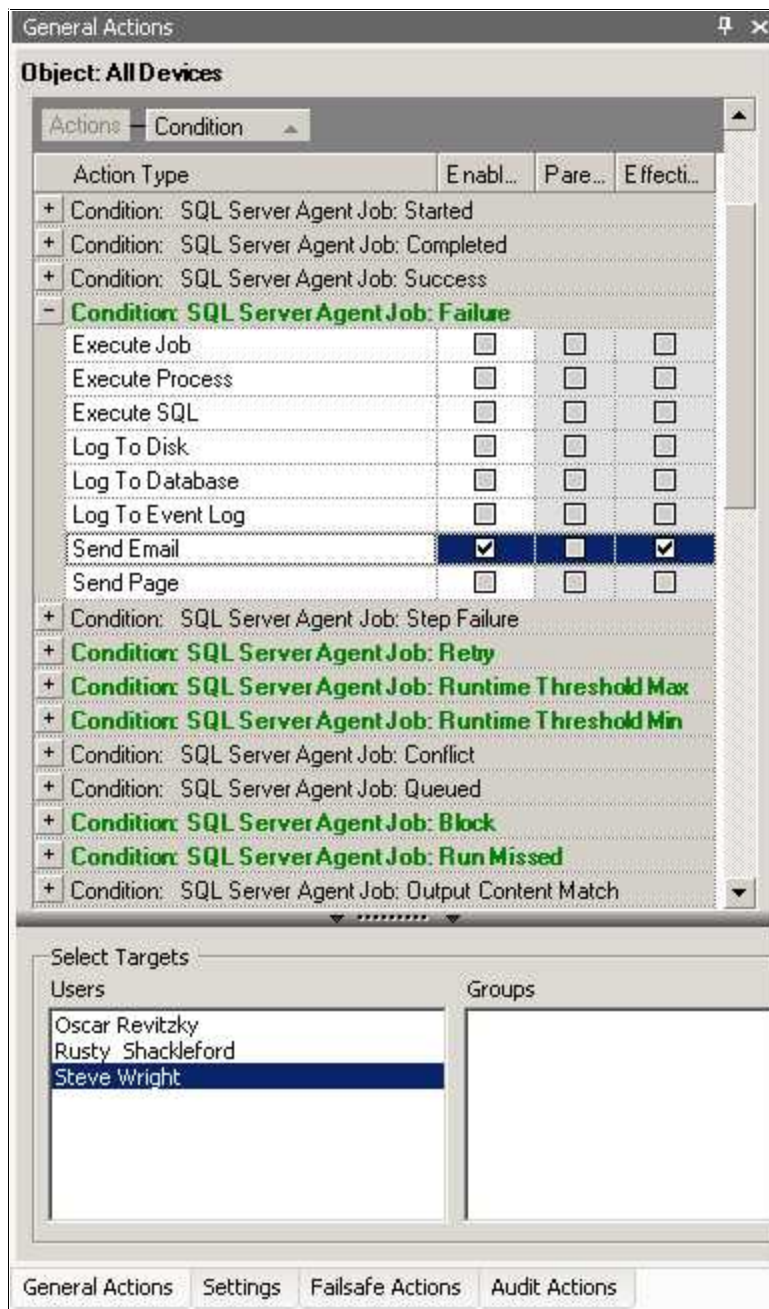


Global Event Actions

Wouldn't it be comforting to know that every new scheduled job receives a baseline set of alert conditions? You probably already manually configure individual failure alerts for most jobs using SQL Mail and SQL Agent Operators, a tedious and time-consuming task.

SQL Sentry Event Manager has many more notification conditions and resulting actions than those available with SQL Agent, and setting them at the global level can be the most powerful and efficient method to implement them.



When selecting the **Devices** or **SQL Servers** root nodes in the **Navigator** pane, any actions or settings configured at this level will automatically be inherited by all objects below that node. For example, if you select the Devices node and configure a "Send Email"



action for the "SQL Agent Job: Failure" condition, that action will automatically be set for any job that fails on any SQL Server watched by Event Manager. This is how Event Manager provides truly centralized configuration for notifications and other actions. Once global actions and settings are configured, more granular configuration can be made at the device, connection, or object level.

Below are a few recommended settings for your initial global conditions and actions. This will get you started sending notifications with Event Manager as quickly as possible. For each condition below, you should mark the checkbox to the right of the associated "Send Email" and/or "Send Pager" actions, then select the users and/or groups you want to be notified whenever a watched job meets the condition:

Failure

Fired whenever any watched object fails.

Block

Fired whenever a watched job is involved in a blocking condition, either blocked or blocking.

Runtime Threshold Min

Fired whenever an event runs for x% or less than its average runtime. This condition can be very valuable for detecting problems with jobs that don't always return reliable status information (success or failure) to SQL Server Agent. (You must specify the percentage on the **Settings** tab under *SQL Server Settings > SQL Server Agent Job*.)

Runtime Threshold Max

Fired whenever an event runs for x% or greater than its average runtime. This condition is great for detecting "hung" jobs, or jobs that have otherwise exceeded their normal runtime window. . (You must specify the percentage on the **Settings** tab under *SQL Server Settings > SQL Server Agent Job*.)

NOTE: These are only basic examples. Please refer to the Event Manager Enterprise User Guide for more details on configuring global and job-level conditions and actions.

About SQL Sentry Event Manager

SQL Sentry Event Manager is the ultimate scheduling, alerting and response system for optimizing schedule performance of database servers and related IT resources. Event Manager provides DBAs with "Outlook-style" visibility and functionality for managing SQL Agent jobs, Windows Tasks, and Oracle jobs in increasingly complex cross-platform environments.

Download a free trial at www.sqlsentry.net and contact our team at sales@sqlsentry.net to find out how SQL Sentry Event Manager can optimize your server schedule performance.